

Rebel Series

Short Magazine Bar Loader for Fixed Headstock CNC Lathes

EDGE TECHNOLOGIES

For Short Production Runs on Fixed Headstock Lathes



Rebel V65 Servo V3

Diameter range:
5mm to 67mm (0.196" to 2.630")
(must not exceed spindle length)

Pusher sizes:
6 — 10 — 19

Rebel 80 Servo V3

Diameter range:
8mm to 80mm (0.315" to 3.15")
(must not exceed spindle length)

Pusher sizes:
10 — 19

Rebel 102 Servo V3

Diameter range:
8mm to 102mm (0.315" to 4.00")
(must not exceed spindle length)

Pusher sizes:
10 — 19

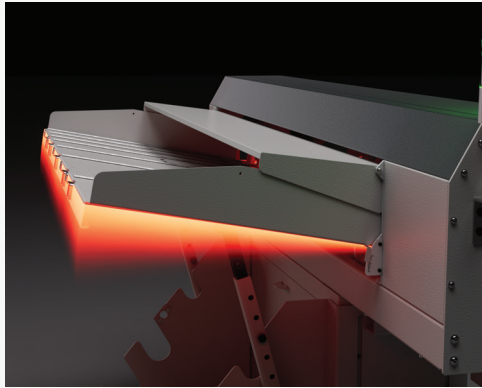


Rebel Series

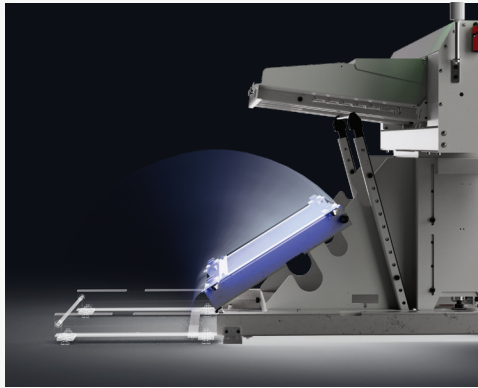
Short Magazine Bar Loader for Fixed Headstock CNC Lathes



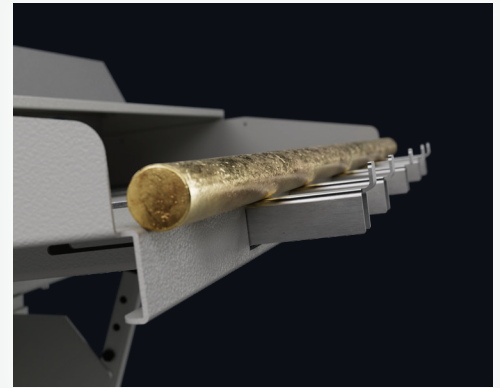
Features



Soft load material presentation. Material is lifted to centerline height. An adjustable magazine incline allows the short loader to “soft load” bars.



Folding axial shift. The folding axial shift allows for easy maintenance and spindle liner changes. The shifting device is standard in X-axis, optional with Z-axis.



Bar stock staging tray. The tray assists in loading bars into the magazine, reducing harm to the operator.

Slug Loading

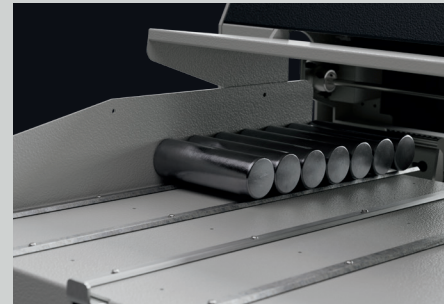
A slug load involves a single, solid material piece being machined into a specific shape or size.

The rule for slug loading is: One bar equals one part.

The operation is only performed on a short loader, because the short loader is designed to feed material into the spindle and stop at a programmed position.

Advantages

1. The next bar is staged in the v-tray and queued to be loaded.
2. Remnants from a 12' bar feeder can make additional parts.
3. Perform a second operation on an already-completed part.
4. Slug load material that's been cut to length.
5. Produce less waste with challenging, expensive, or hard-to-acquire materials.



Edge Technologies

Bar feeding has remained the focus at Edge Technologies for 40+ years. Experience and breadth of model offerings drive our customer-centric approach to solving your bar feeding needs. Service, parts, and technical support have always been the backbone of the company, because we understand that performance and up-time of a bar feeder is a difference maker to your bottom line.

Scan here for more information about Slug Loading



314.692.8388

15703 Westport Commerce Drive
Maryland Heights, MO 63146

www.edgetechnologies.com