

Ranger 120

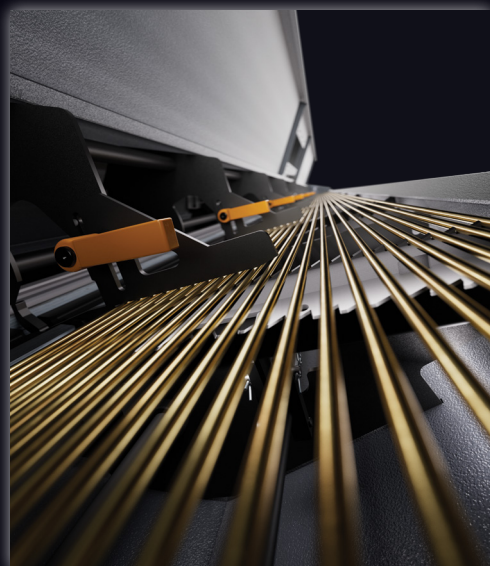
Automatic Magazine Bar Feeder for Fixed and Sliding Headstock CNC Lathes

EDGE ○○○
TECHNOLOGIES

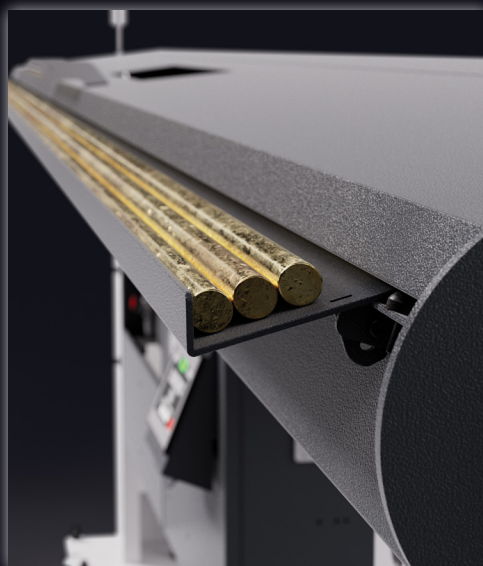


Diameter range: 0.8mm to 19mm (0.031" to 0.750")
21mm (0.826") max with bar prep.

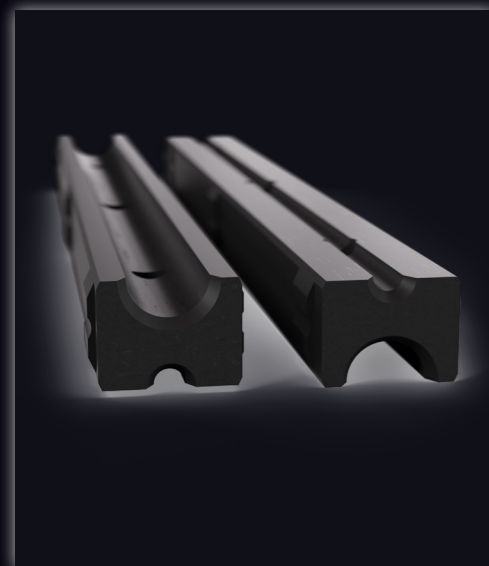
Bar length: 1000mm to 4040mm (39.4" to 13'3")



Dual-style loading rack. A sawtooth walking beam for small diameter loading and separation converts to a standard rack for larger diameters.



Bar stock staging tray. The tray assists in loading small bars into the sawtooth separation mechanism.



Twin guide channel sets. Two guide channel ranges are built into one set. Change the diameter range with a quick 180-degree index of the carriage.

Ranger 120

Automatic Magazine Bar Feeder for Fixed and Sliding Headstock CNC Lathes



Technical Data

Bar Diameter

0.8mm - 21mm (0.031" - 0.826")

Bar Length

1000mm (39.4") - 4040mm (13'3")

Magazine capacity

228mm (9") or 20 bars
4mm or less

Remnant length

406mm max. (16")

Bar Loading Cycle Time

Approx. 35 seconds

Feed Force (Pusher Torque)

Max 450 N, adjustable

Forward Feed Rate

593mm/sec (1400in/min)
max, adjustable

Return Feed Rate

1000mm/sec (2360in/min)
max, adjustable

Power Consumption

1.5 kW/2 kVA

Operating Voltage

230 V/60Hz - 3 phase

Control voltage

24V DC

Oil Capacity

46 liters (12 gallons)

Oil viscosity

ISO 64 cST - Machine oil
ISO BG32 - Air oil

Compressed Air Supply

(6 bar) - 90 psi

Compressed Air Consumption

~8 liters per loading cycle

Sawtooth Capacity

0.8 mm to 4 mm

Standard Capacity

5 mm to 21 mm

Machine Weight (without oil)

567 kgs (1250 lbs)

Material Straightness Specification

0.007" TIR/foot of material

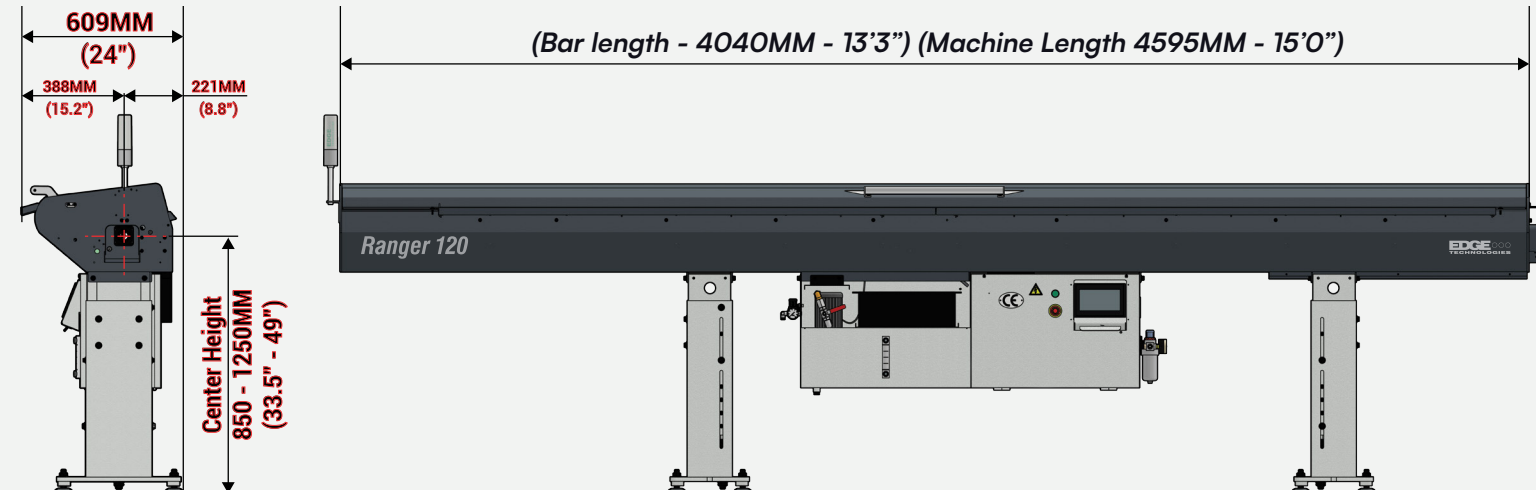
300 Part Program Storage

PLC motion control is Ethernet ready.

Guide Channel Sizes

Guide Channel Sets	Pusher Diameter	Minimum Bar Size	Maximum Bar Size	*Maximum Bar Size with Front Remnant Expulsion
6mm 11mm	5mm 10mm	0.8mm (0.031") 3mm (0.118")	4mm (0.137") 9mm (0.354")	5mm (0.196")* 10mm (0.393")*
6mm 14mm	5mm 12mm	0.8mm (0.031") 3.2mm (0.125")	4mm (0.137") 11mm (0.437")	5mm (0.196")* 13mm (0.512")*
8mm 18mm	7.5mm 16mm	3mm (0.118") 5mm (0.196")	6.4mm (0.250") 14.2mm (0.562")	7mm (0.275")* 17mm (0.669")*
8mm 22mm	7.5mm 20mm	3mm (0.118") 8mm (0.315")	6.4mm (0.250") 19mm (0.750")	7mm (0.275")* 21mm (0.826")*

* This max diameter is attainable only if remnant is ejected through the lathe spindle or if one end of the bar stock is turned down to a smaller O.D. to accept a small O.D. collet.



Edge Technologies

Bar feeding has remained the focus at Edge Technologies for 40+ years. Experience and breadth of model offerings drive our customer-centric approach to solving your bar feeding needs. Service, parts, and technical support have always been the backbone of the company, because we understand that performance and up-time of a bar feeder is a difference maker to your bottom line.

Scan here for more information about the Ranger 120



314.692.8388

15703 Westport Commerce Drive
Ste. 100
Maryland Heights, MO 63146

www.edgetechnologies.com