

Rebel 65 Servo V3

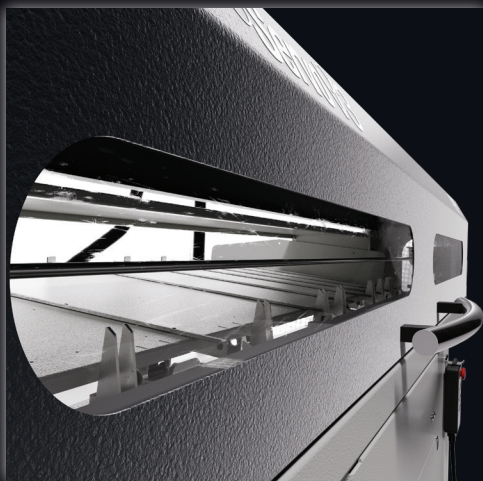
Short Bar Loader for Fixed Headstock CNC Lathes

EDGE TECHNOLOGIES



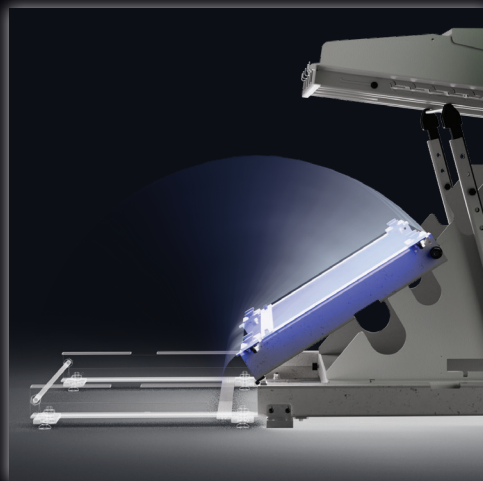
Diameter range: 6mm to 67mm (0.236" to 2.630")

Bar length: Up to 1524mm (60")* Not to exceed spindle length*



Compact and Robust.

Big windows make it easy to see what's going on, so setup and visual checks are quick and simple.



Folding Axial Shift. The folding axial shift allows for easy maintenance and spindle liner changes, and eliminates tripping hazards. The shifting device is standard in X-axis, optional with Z-axis.



Angled Rollers. Capable of handling custom profiles, including square, hex and rectangle stock, these rollers make light work of pushing heavy bar into the lathe spindle.

Rebel 65 Servo V3

Short Bar Loader for Fixed Headstock CNC Lathes



Technical Data

Bar diameter

6mm to 67mm (0.236" to 2.630")

Bar Length

Min - 280mm (11")
Max - 1524mm (60")*
(must not exceed spindle length)

Magazine Capacity

711mm (28")

Rapid Return Rate

1300mm/sec. (4ft/sec.)

Bar Change Time

Approx. 22 seconds

Operating Voltage

Electric supply 230V (60 Hz)
3-phase

Bar Pushers

Ø 6mm Hardened steel
Ø 10mm Hardened steel
Ø 19mm Hardened steel

Weight

500 kg (1,100 lbs)

Spindle Center Height

850mm - 1,500mm (33.5" - 59")

300 Part Program Storage

PLC motion control is
Ethernet ready.

Slug Load and Hand Load
options available

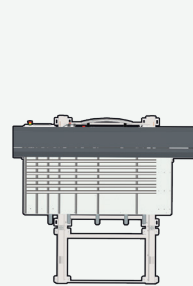
Specifications

Bar Size	Rack Capacity	Bar Length*	X & Z Axial Track Travel
6mm (0.236") - 67mm (2.630")	711mm (28") deep	1524mm (60")*	X Axis = 740mm Z Axis = 740mm

* Not to exceed spindle length

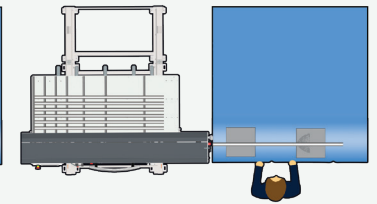
Loading Configuration

Front Load

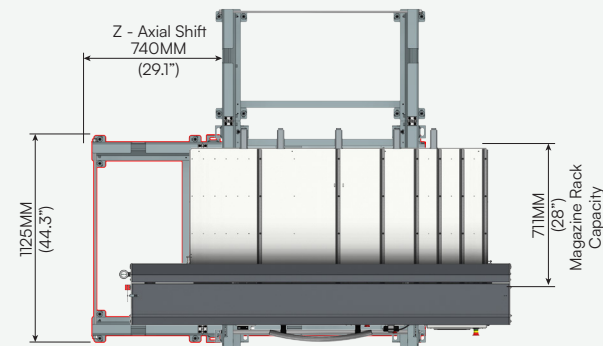
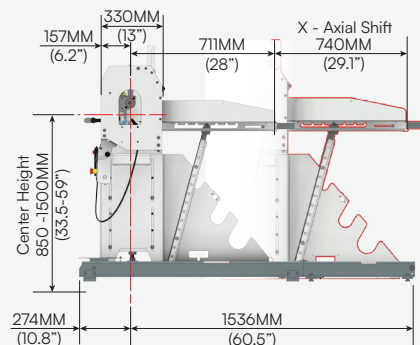
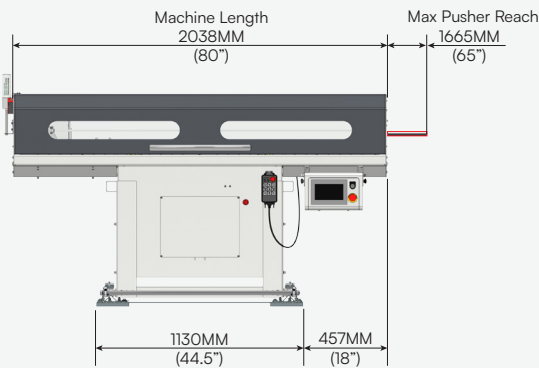


Feeding from front

Rear Load



Feeding from rear



Edge Technologies

Bar feeding has remained the focus at Edge Technologies for 40+ years. Experience and breadth of model offerings drive our customer-centric approach to solving your bar feeding needs. Service, parts, and technical support have always been the backbone of the company, because we understand that performance and up-time of a bar feeder is a difference maker to your bottom line.

Scan here for more information about the Rebel 65 Servo V3

